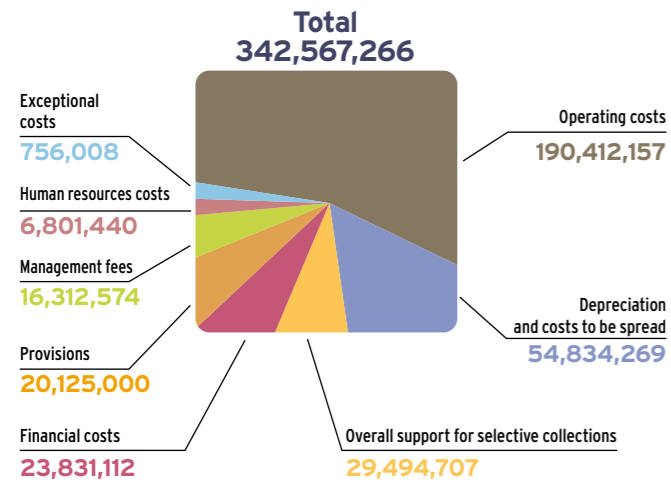
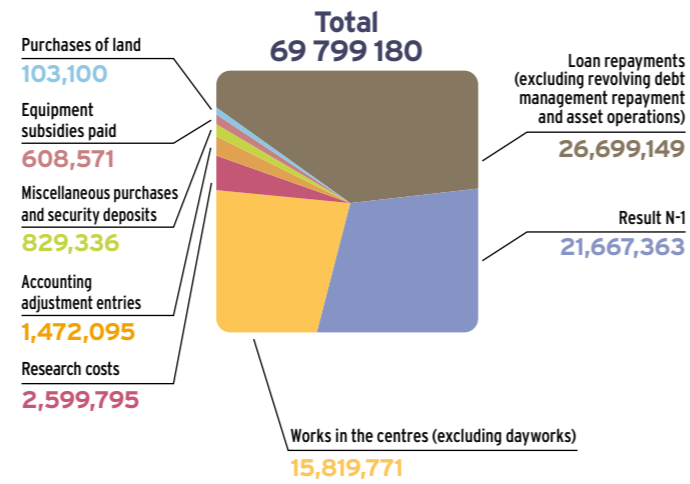


SYCTOM BUDGET FOR 2012: €412.4 MILLION

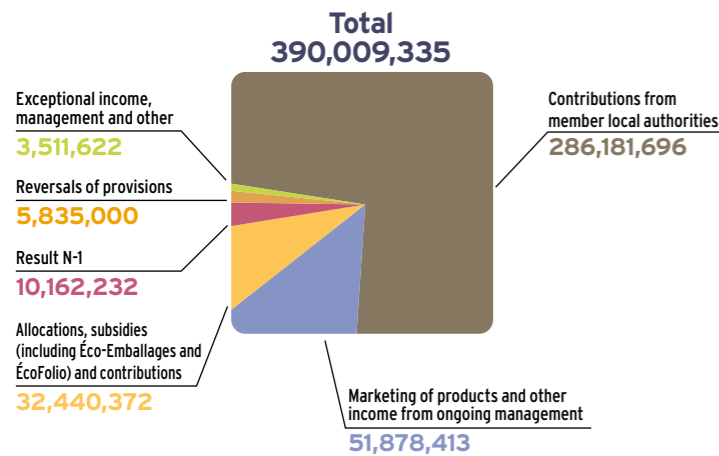
OPERATING EXPENDITURE In euros



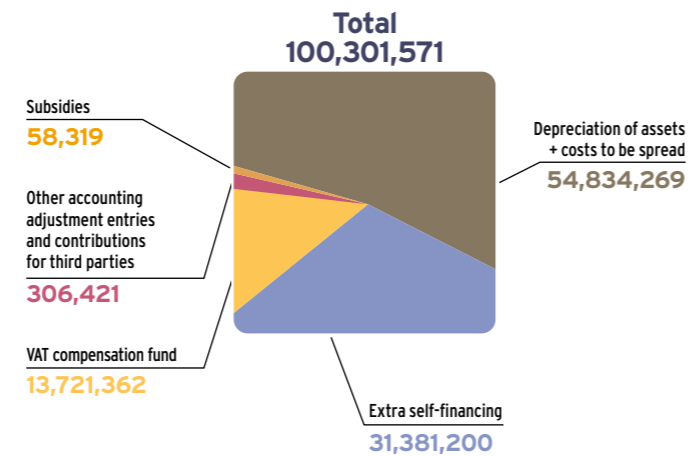
INVESTMENT EXPENDITURE In euros



OPERATING INCOME In euros



INVESTMENT INCOME In euros



Towards a sustainable city

Syctom, the metropolitan agency for household waste, carries out a public service mission in urban ecology. It processes and recovers household waste from half of all inhabitants in the Paris region, or almost 10% of the national population. Through its commitments, its mobilisation and carrying out its activity, Syctom helps to promote sustainable development and reach the targets set by national and regional policies in the area of waste management, the first step of which is prevention. Driven by a territorial solidarity approach, it brings a global view to the challenges of metropolitan planning in the Paris region. Favouring cooperation, it is in touch with the needs and expectations of society when it comes to building a sustainable and unified region.

Syctom's installations

In an effort to assume its full responsibility, Syctom has its own industrial facilities which it maintains, modernises and develops. Syctom invests so it can treat the household waste produced in its sphere, in keeping with its commitment to community.

Syctom has 12 processing units spread out over 7 municipalities: 6 selective collection sorting centres, 2 waste reception centres, 1 residual household waste transfer centre, and 3 incineration units with energy recovery. In 2012, it also mobilised 22 private installations.

The following are planned: a methanisation unit in Romainville and a river platform in Bobigny, an organic and energy recovery centre to replace the incineration unit in Ivry-Paris XIII, an energy recovery centre for silt resulting from the treatment of wastewater and organic waste in Blanc-Mesnil/Aulnay-sous-Bois and two selective collection sorting centres in Paris.



Business overview

EDITORIAL

“TOWARDS A MORE SUSTAINABLE WAY OF THROWING AWAY.”



François DAGNAUD, Chairman of Syctom, the metropolitan agency for household waste

Syctom is taking unprecedented initiatives as it puts prevention at the heart of its work. Our prevention plan 2010-2014 has expanded efforts undertaken since 2004. In 2013, our investment in promoting the reduction of waste will amount to €10.5 million, including our contribution to the ADEME budget via the TGAP tax. The trend of a sustainable and consistent decrease in the production of household waste in Syctom's sphere bears testament to our priority, even with social and economic factors influencing the level of consumption.

Our actions are part of a new metropolitan governance undertaken with our member local authorities. An improvement programme for collecting and processing household waste (the waste PACT) was put in place to simplify the organisations, bring expertise together, harmonise practices, and share operations and resources. The aim of these steps is to rationalise the public service of household waste management on a metropolitan level and achieve the prevention and recycling objectives established by the public authorities. In the context of this programme, agreements have been signed with SIGIDURS (Sarcelles) and SIEVD (Rungis) that reinforce solidarity across the metropolitan area. Also contributing to regional balancing between the capital and its suburbs was the opening of the Paris XV sorting centre and the planned Paris XVII sorting centre.

With the aim of taking a more environmental approach in the context of the European hierarchy for treatment methods, Syctom has fully committed to organic household waste recovery. As well as its methanisation centre projects, Syctom is supporting the development of the domestic composting of organic waste in its sphere, in particular through the “50,000” composters initiative.

However, regulations are in constant evolution and not always immediately clear, and there are multiple constraints. These include penalties for the least-green treatment methods, linked to European and national objectives for the reduction of landfill and incineration, putting a heavy burden on our investment choices, whilst other solutions are not encouraged by public authorities. It is time to step away from the “neither-this-nor-that” attitude that ends up discounting the entirety of the waste treatment methods.

In this respect I would like to thank Syctom officials for the solidarity they have shown throughout the difficult moments, and to our teams for their conscientious involvement in our projects.

2.34
million tonnes of waste processed by Syctom or 407 kg/year/inhabitant of household waste

-6.2%
waste processed by Syctom since 2008*

* Reference year for the Grenelle law - The waste concerned is HW, SC and glass.

70%
Rate of recycling for materials from selective collections

€29.5 million
given to participating municipalities to support selective collection of packaging and papers

-38%
of waste buried in ISDND

2012 OPERATING SUMMARY

Figures in brackets correspond to 2011 data.
The 2012 data was drawn up on 30 April 2013.

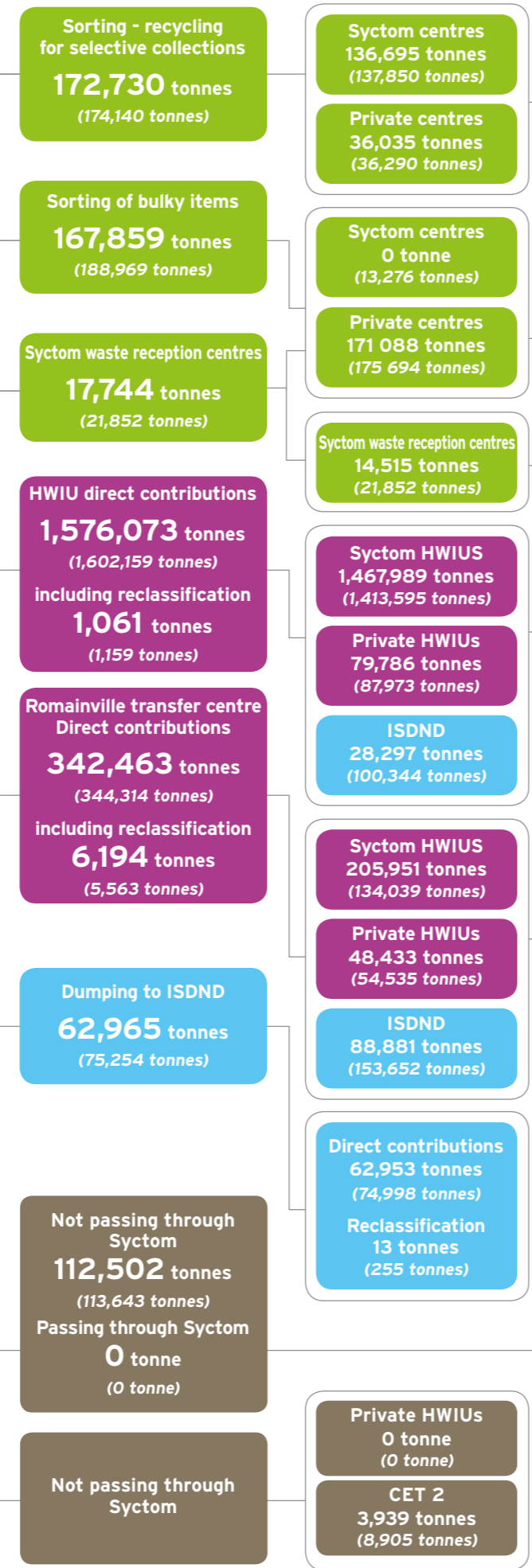
Total tonnage of household waste in Sycotm's sphere
2,456,275 tonnes
(2,529,235 tonnes)

Waste processed by Sycotm
2,339,834 tonnes
(2,406,687 tonnes)

of which household waste tonnage
1,981,501 tonnes
(2,021,726 tonnes)

Glass
112,502 tonnes
(113,643 tonnes)

Waste from non-dumping Sycotm municipalities (HW and BO)
3,939 tonnes
(8,905 tonnes)



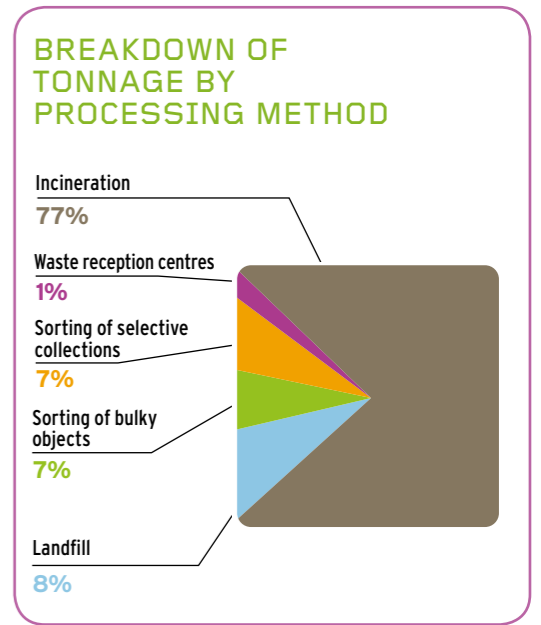
Total materials recovery
706,215 tonnes
(691,679 tonnes)
or 29%* of waste
including clinkers, ferrous and non-ferrous waste

339,939 tonnes
(356,147 tonnes)

Total energy recovery
Household waste + reclassification + sorting rejects
1,846,421 tonnes
(1,732,948 tonnes)
or 60%* of waste

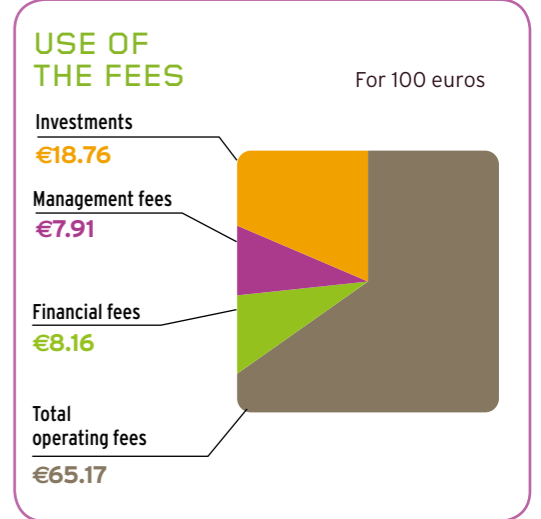
Total Sycotm burial in ISDND
Household waste + reclassification
180,144 tonnes
(329,249 tonnes)

Household waste + reclassification + sorting rejects
276,821 tonnes
(449,515 tonnes)
or 11%* of waste



COST OF PROCESSING PER TONNE

Sorting of selective collections	€234.52
Bulky objects	€104.10
Incineration with energy recovery	€81.10
Landfill (transport included)	€98



* Clinkers, ferrous and non-ferrous are subject to materials recovery. To avoid a double count, this percentage was calculated by subtracting these materials from the total energy recovery tonnage. All percentages are calculated including glass.