

ACTIVITY REPORT 2009

2009

422 kg
of household waste/
person/year in
SYCTOM'S
sphere

28%
of waste collected
is subject to
materials
recovery*

64,354
fewer tonnes of waste sent
to the landfill

3%
reduction in
tonnage collected
between 2008
and 2009

€43.15
million
income from
energy
recovery

+40%
of waste evacuated
using alternative
transport

320,000
housing units heated
and provided with hot
water thanks to
SYCTOM's incineration
centres

€4.5
million
allocated for
prevention

47%
rate of materials
recovery for
bulky objects*

A pivotal year for SYCTOM



FRANÇOIS DAGNAUD
Président du SYCTOM de
l'Agglomération parisienne

A public player in sustainable development and a major player across our country, SYCTOM works under the scrutiny of citizens, associations, the media and its partners, be they local authorities, institutions or companies. The growing importance of environmental issues in public policies brings us new challenges every year.

In this respect, 2009 marks a new phase for us, with the first public debate in France devoted to household waste disposal. In the face of production and consumption behaviours, SYCTOM has had to reassert the priority of reducing waste, the need for an efficient and protective public service, the necessity to diversify its competencies and to innovate, proposing disposal and recovery methods which are suited to each type of waste.

At a time of measured management of natural resources, the strategic priority which we give to the reduction of waste is proof of our commitment to the sustainable city.

But at the same time we have to fulfil our public service mission. And we do this with a territorial solidarity approach, in the Paris region, anticipating the changes underway

and allowing a global approach to metropolitan planning challenges.

SYCTOM has positioned itself as a reference in household waste management in the Paris region, an efficient governance tool for a public service in urban ecology.

Indeed, SYCTOM has become the French agency for household waste.

The initiatives which we took in 2009 on the reform of the TGAP tax and the renewal of the certification of the eco-organisations in the household packaging sector, for example, have marked SYCTOM as an important voice both on a regional and national level.

2009 was also marked by the economic and social crisis, which affected SYCTOM's business.

Although the reduction in tonnage is in line with our prevention objectives and fuels hope in terms of long-term changes in behaviour, it also reflects the day-to-day difficulties met by the population of our country. The control of our budget, which we have once again demonstrated this year, is key to our credibility.

Indeed,
SYCTOM
has become
the French
agency for
household
waste.

To demonstrate our commitment to meeting these challenges together, we have to continue our efforts for better information on our projects of course, but also on our daily household waste disposal activities and our prevention initiatives.

* To enable statistical comparisons, it is necessary to incorporate data relating to glass into SYCTOM's data.

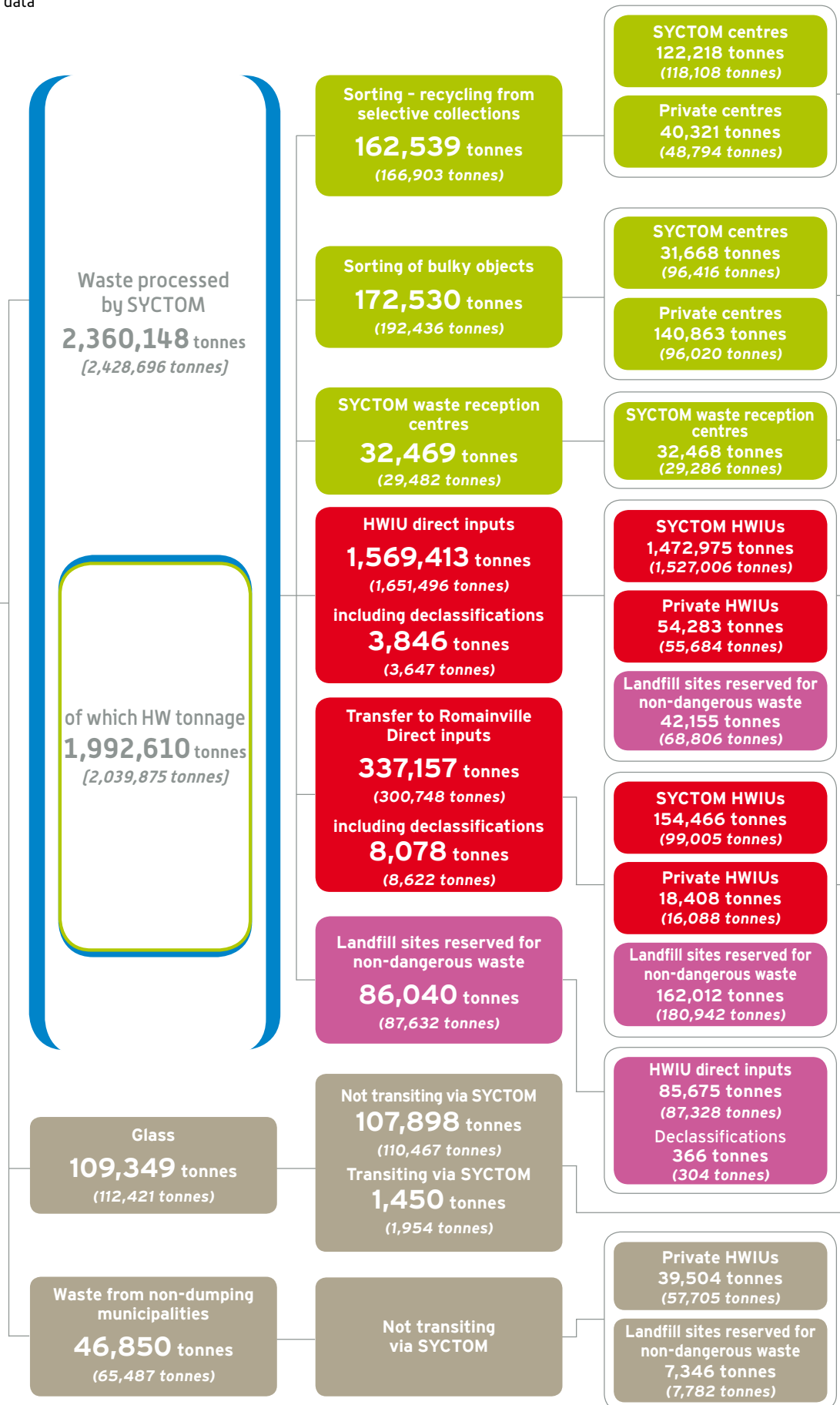
OPERATING SUMMARY 2009

Figures in brackets correspond to 2008 data

Human resources as at 31/12/2009:

- ➔ SYCTOM: 115 agents
- ➔ Private operators of SYCTOM's processing units: 773 staff

Total tonnage of household waste on SYCTOM's territory
2,516,347 tonnes
(2,606,604 tonnes)



* Clinkers, ferrous and non-ferrous are subject to materials recovery. To avoid a double count, this percentage was calculated by subtracting these materials from the total energy recovery tonnage.

Recycling	114,083 tonnes (117,008 tonnes)
Incinerated rejects	37,048 tonnes (32,861 tonnes)
Waste sent to landfill site	11,409 tonnes (17,033 tonnes)

Recovery	81,402 tonnes (86,895 tonnes)
Waste sent to landfill site	91,128 tonnes (105,542 tonnes)

Recovery	15,879 tonnes (15,282 tonnes)
Incinerated rejects	811 tonnes (828 tonnes)
Waste sent to landfill site	15,777 tonnes (13,371 tonnes)

Evacuated clinkers	334,596 tonnes (328,662 tonnes)
Ferrous sold	38,661 tonnes (36,079 tonnes)
Non-ferrous sold	3,104 tonnes (2,321 tonnes)
REFIOM (including PSR 2,810 t)	44,258 tonnes (41,691 tonnes)
Electricity sold	156,142 Mwh (103,615 Mwh)
Steam (other)	2,762 Mwh (3,386 Mwh)
Steam sold (CPCU)	2,522,378 Mwh (2,541,579 Mwh)

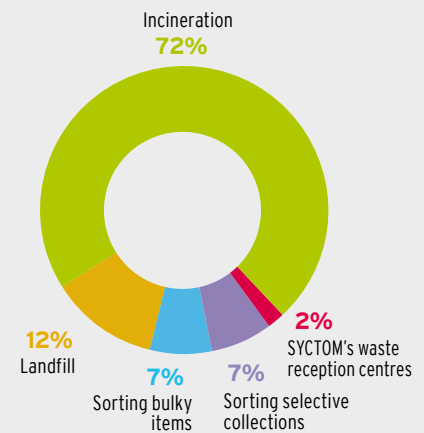
Recycling	109,447 tonnes (112,378 tonnes)
-----------	------------------------------------

Total materials recovery:
697,172 tonnes
 or **25%*** of waste
 (698,625 tonnes)
 Of which clinkers,
 ferrous and non-ferrous
376,361 tonnes
 (367,062 tonnes)

Total energy recovery
 Household waste
 + declassification + rejects
1,737,991 tonnes
 or **58%*** of waste
 (1,731,472 tonnes)

**Total SYCTOM landfill
 in landfill sites reserved
 for non-dangerous waste**
 Household waste
 + declassification
290,207 tonnes
 (337,380 tonnes)
 Household waste
 + declassification + rejects
408,521 tonnes
 or **17%** of waste
 (473,631 tonnes)

**BREAKDOWN OF TONNAGE
 BY PROCESSING METHOD**

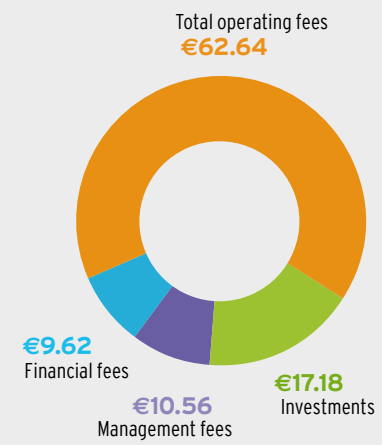


**COST OF PROCESSING
 PER TONNE**

Selective collections	€199.82
Bulky objects	€101.54
Incineration with energy recovery	€83.36
Landfill	€92.58

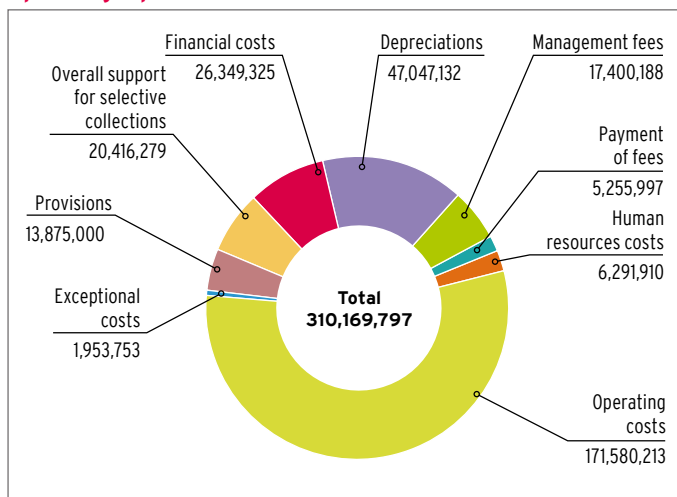
USE OF THE FEES

For 100 euros*

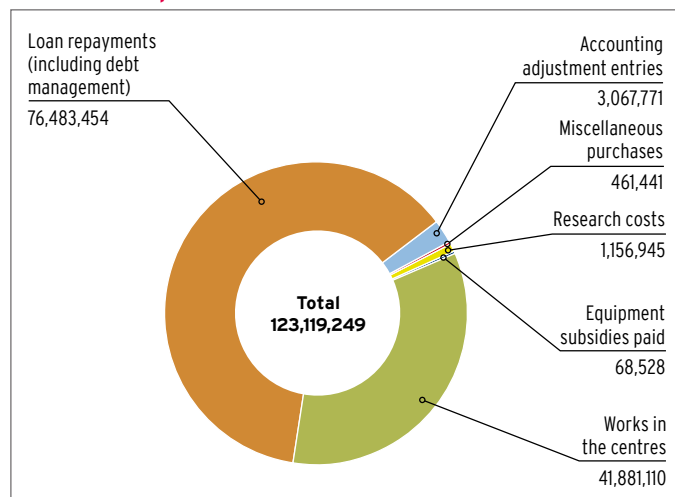


2009 SYCTOM BUDGET: €433.29M

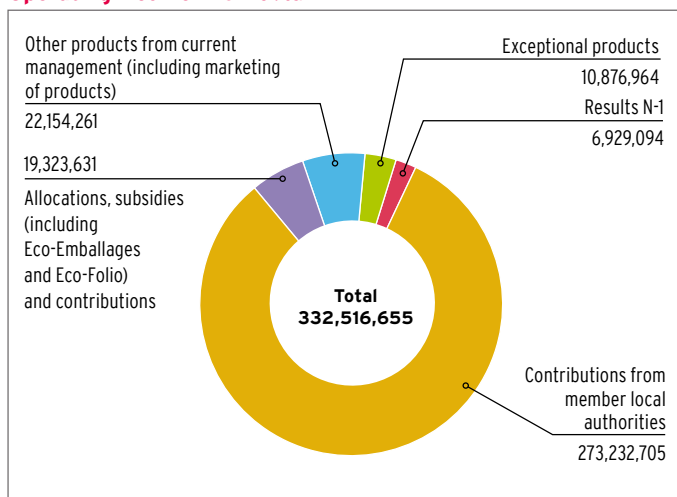
Operating expenses in € incl. tax



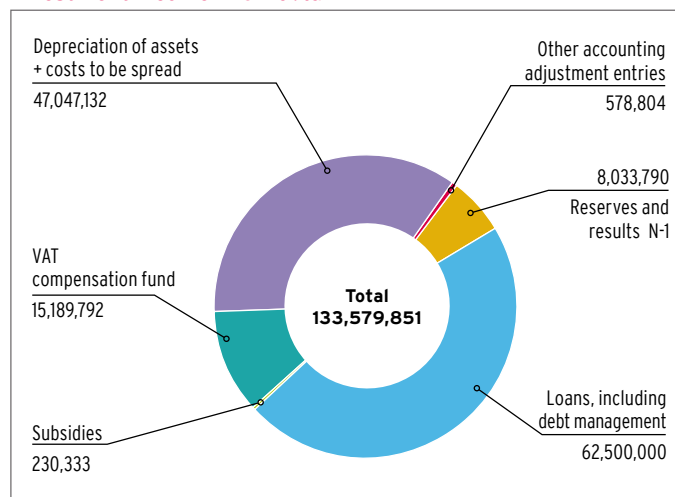
Investment expenditure in € incl. tax



Operating income in € incl. tax



Investment income in € incl. tax



SYCTOM is a major public player in sustainable development. Responsible for processing and recovering household waste from half of the Paris region, or some 10% of the national population, it contributes through its commitments and activities to promoting sustainable development on its territory.

A public service mission

SYCTOM of the Paris agglomeration is an administrative public establishment which brings together 84 municipalities across 5 départements: Paris, Hauts-de-Seine, Seine-Saint-Denis, Val-de-Marne and Yvelines.

With a view to the sustainable management of waste, SYCTOM's strategy is to:

- contribute to reducing the production of waste,
- diversify its recovery methods and increase its processing capacities in favour of materials and organic recycling,
- limit the use of landfill,
- control the sanitary and environmental impacts of its activity, in particular greenhouse gas emissions,
- act in transparency and cooperation.

SYCTOM'S installations

In a concern to fully exercise its responsibilities, SYCTOM has its own industrial facilities, of which it entrusts the operation to private companies under public contracts. Respecting community logic and attentive to the solidarity between its territories, its 13 processing units are distributed across 8 municipalities. Under construction: 1 selective collection sorting centre in Paris in the 15th arrondissement, 1 methanisation unit in Romainville and 1 river platform in Bobigny. Planned: 1 methanisation centre in Blanc-Mesnil/Aulnay-sous-Bois, 2 selective collection sorting centres in Paris and Paris XVII and 1 pre-sorting and river transfer of bulky objects centre in Paris XIII.