

OPERATING SUMMARY 2015



As the main public player in household waste treatment not only in France but also in Europe, Sycatom, along with member local authorities, fully assumes all responsibilities related to its activities and its status. It is first and foremost a partner involved in implementing the objectives of the Energy Transition Law. This law, passed in August 2015, has strengthened the local authorities which, like Sycatom, had already grasped the magnitude of the challenges and the task at hand. It guides us in combining the fight against climate change - particularly through prevention - with industrial performance.

Waste processing and the production of secondary materials are more than ever an opportunity for the French industry. Sycatom has chosen to use public procurement to provide a massive support to studies and investments aimed to maintain, renovate and develop industrial facilities by committing to almost two billion euros in 2015. Waste, which has become a resource, represents a rich potential for efficient energy recovery at an acceptable cost. The amendment of our statutes encourages us to pursue this approach by giving us the means to further develop this activity and build the necessary partnerships.

This is our duty as a responsible public actor. Producing clean energy contributes to environmental protection. This commitment is the guarantee for the acceptability of our facilities. By supporting the creation of new recycling channels, by preparing us for the separate treatment of bio-waste and the extension of sorting instructions to all packaging, we are forging ahead towards our goal of no longer burying waste.

In December 2015, our partnership with COP21 enshrined this determination and our ability to voice two positive messages, namely, prevention and recovery. The virtuous approach to waste cycle implies endorsing the objective of reducing waste and Sycatom supports this movement through very concrete actions.

The increased support to member local authorities and setting up eco-facilitator brigades at the disposal of the cities are steps in the right direction. The change made to make our pricing more incentive-based is also a strong signal to member local authorities to stimulate and support their efforts.

In terms of research and development, Sycatom strives to conceive innovative projects such as capturing CO₂ from incineration flue gas and manufacturing of bioplastics. In this quest to provide the best service for residents, Sycatom is not alone. Major urban syndicates in Ile-de-France share these goals of efficiency and exemplary performance. Joint projects around international cooperation and the pooling of facilities and networks crossed a new milestone in 2015. I would like to mention in particular our association with SIAAP for the co-methanisation of fermentable household waste and sewage sludge.

The immense prospects that are opening up before us will further strengthen Sycatom's capacity to meet all the requirements expected of it. To this end, it will process and recover all types of waste entrusted to us and anticipate the advances and changes ahead. At the same time, it will always endeavour to work harmoniously in the dense urban environment that characterises our metropolitan region. It will also contribute the best industrial and logistical choices to the public debate to promote the general public interest.

HERVÉ MARSEILLE
Senator of Les Hauts-de-Seine
Mayor of Meudon
Chairman of Sycatom, the metropolitan agency for household waste



+3%
OF SEPARATE COLLECTION
BETWEEN 2014 AND 2015



30%
OF WASTE RECYCLED INTO
NEW RAW MATERIALS



-2.3%
OF HOUSEHOLD WASTE
BETWEEN 2014 AND 2015



61%
WASTE RECOVERED
AS STEAM AND ELECTRICITY



300,000
HOUSING EQUIVALENTS
HEATED WITH RENEWABLE
ENERGY



-17%
OF CO₂ EMISSIONS
BETWEEN 2004 AND 2014



€5 M
FOR BUILDING
ECO-FACILITATOR TEAMS

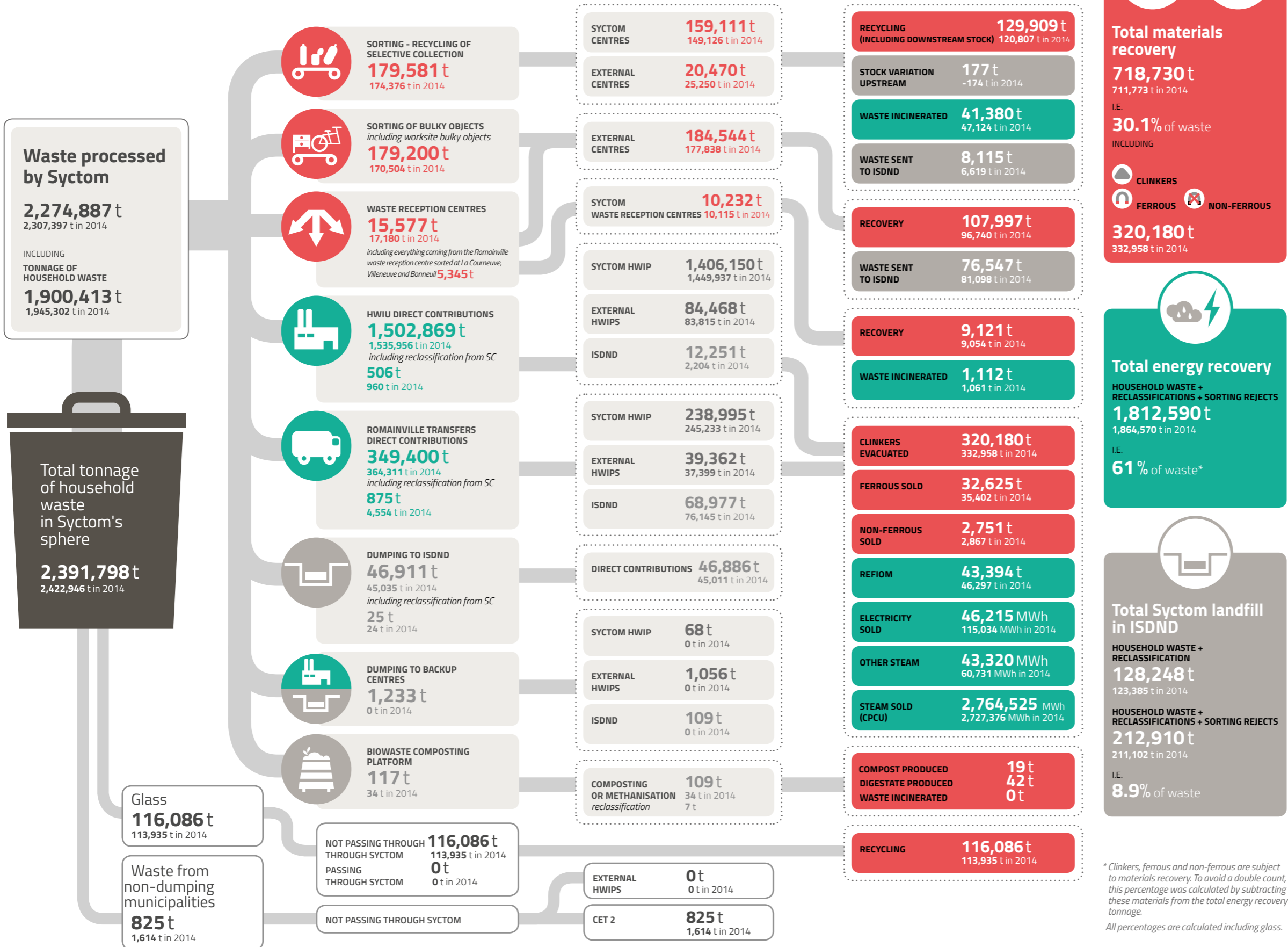


-7%
DROP IN FEES
IN 2015

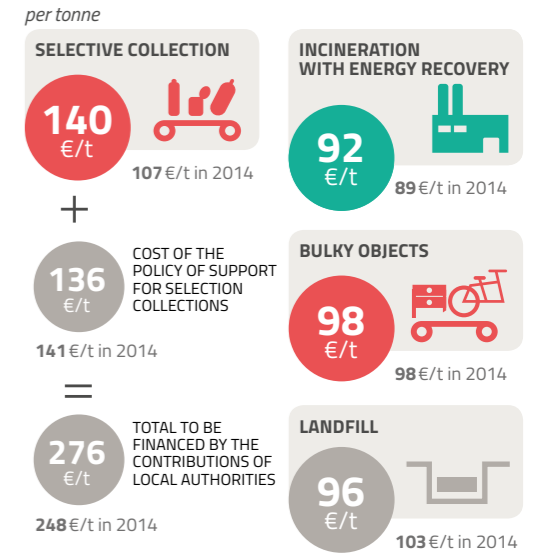


-29%
CONTINUOUS REDUCTION
IN DEBT SINCE 2008

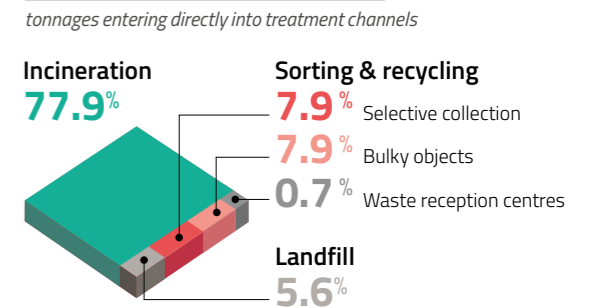
Breakdown of tonnage in different processing centres in 2015



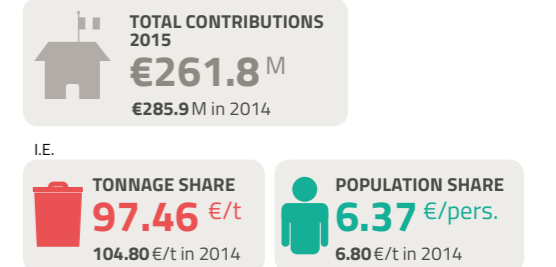
COST OF PROCESSING



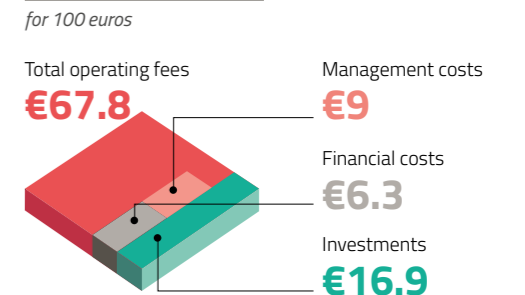
BREAKDOWN OF TONNAGE BY PROCESSING METHODS



CONTRIBUTION FROM LOCAL AUTHORITIES



USE OF THE FEES

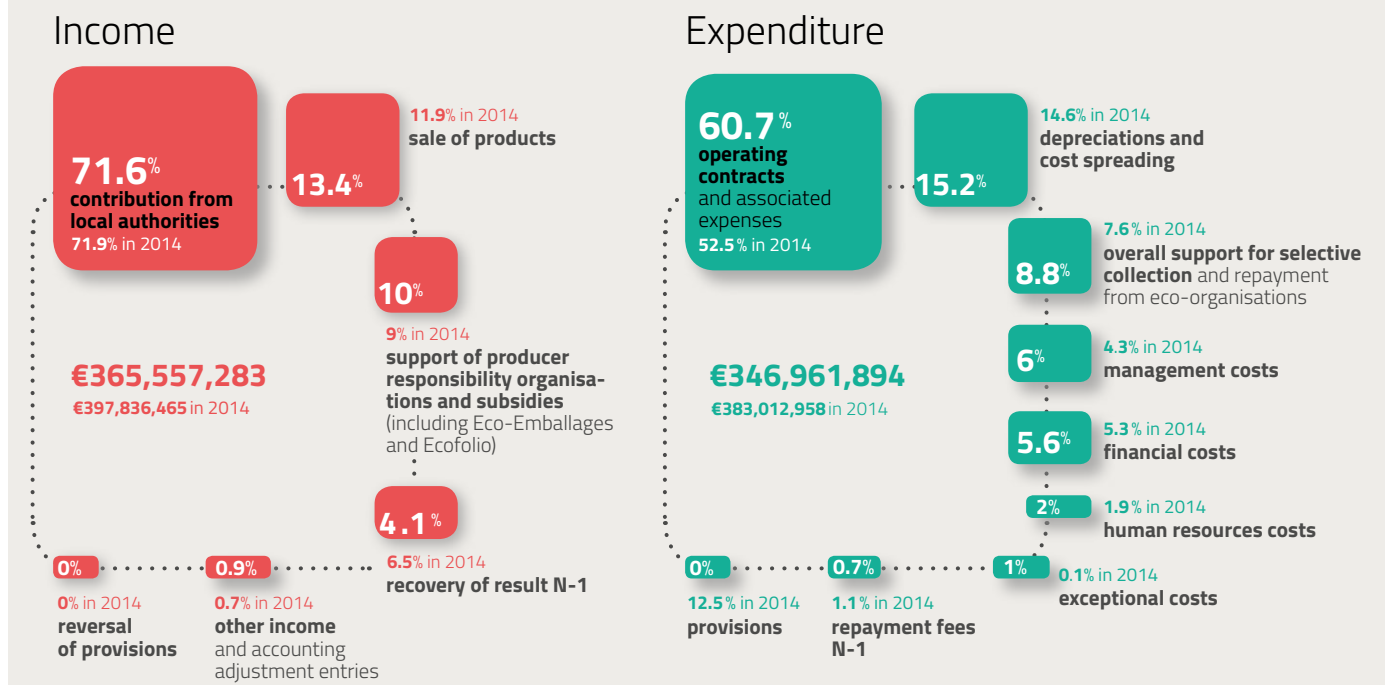


* Clinkers, ferrous and non-ferrous are subject to materials recovery. To avoid a double count, this percentage was calculated by subtracting these materials from the total energy recovery tonnage.
 All percentages are calculated including glass.

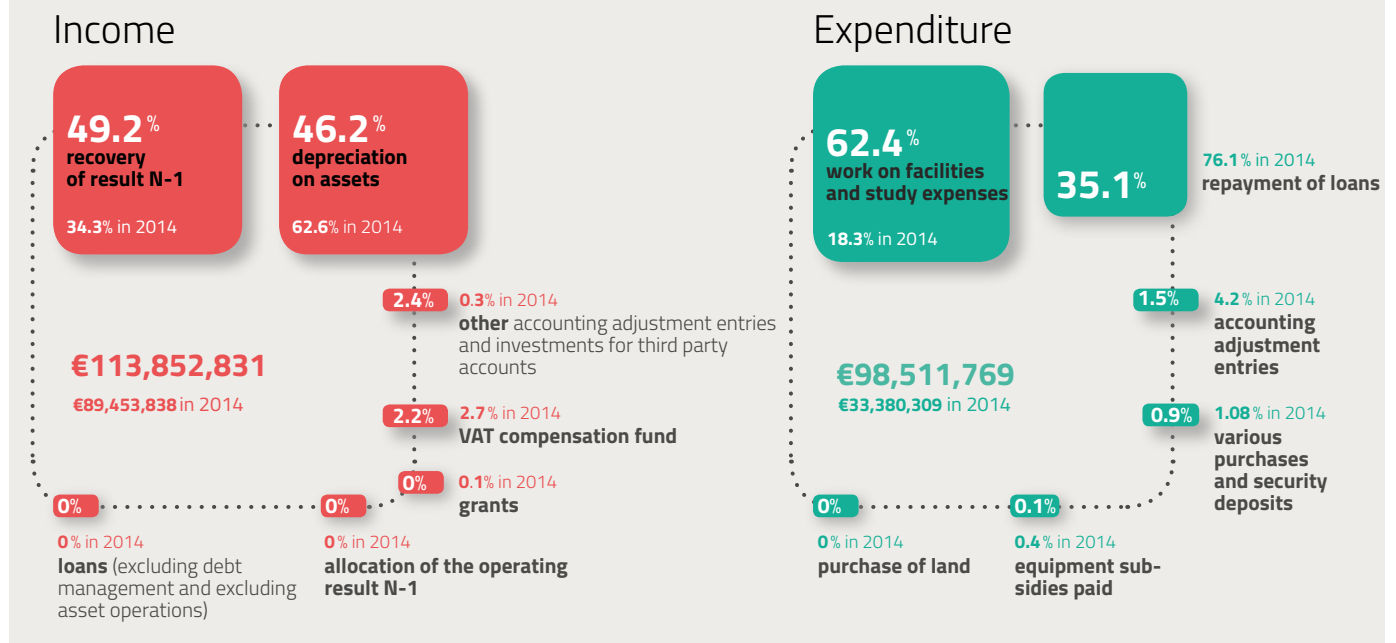
Key figures 2015

These figures are taken from the administrative account 2015

OPERATIONS



INVESTMENT



SYCTOM AND LOCAL AUTHORITIES IN STRIDE WITH GREATER PARIS

For over 30 years, Syctom has been processing and recovering household waste in the most densely populated area of France. Tasked with a demanding public service, Syctom works together with the local authorities in charge of waste collection and all players involved in waste management. Our approach is one of cooperation, further strengthened today to take on the challenges of the newly created Metropolis of Greater Paris.

A CONSTANTLY EVOLVING INDUSTRIAL TOOL

Each year more than 2 million tonnes of waste come into Syctom facilities. Such contributions keep changing in an increasingly demanding regulatory environment, and require us to adapt and renew the facilities continuously for maximised performance.