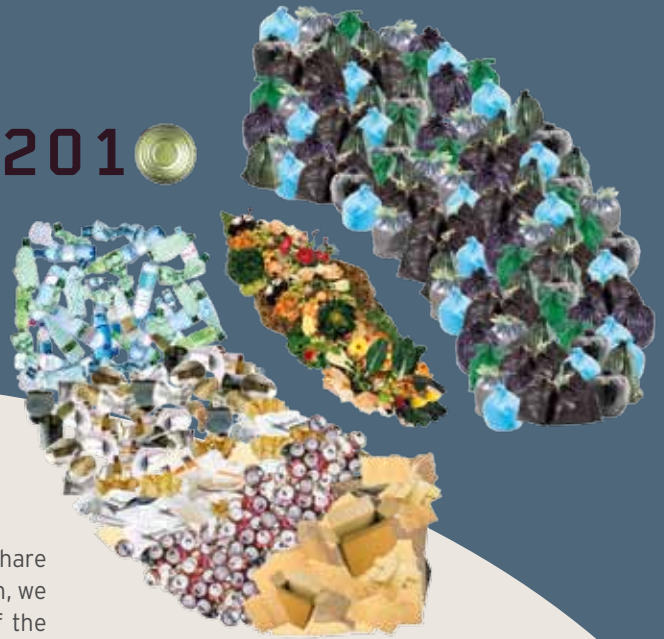


# Activity report

2010



**FRANÇOIS DAGNAUD**  
Chairman of Sycatom,  
the Metropolitan agency  
for household waste

Eager to become more accessible and to share the challenges of our public service mission, we changed our identity in 2010: SYCTOM of the Paris agglomeration has become Sycatom, the Metropolitan agency for household waste. As such, we wish to highlight our inter-communal solidarity approach at the very heart of the greater Paris area and our public service mission in urban ecology, open to one and all.

The adoption of our "Metropolitan Waste Prevention 2010-2014" plan, dedicated to reducing household waste, also marks an additional step in our commitment to reach the objectives of the Environment Grenelle and the Paris PREDMA (regional plan for the elimination of household and related waste). It confirms our determination to mobilise all of the players in the waste chain and our commitment alongside metropolitan municipalities to implement local prevention programmes throughout our sphere.

The extension of the dialogue on the project for transforming the Ivry-Paris XIII centre following the first public hearing on household waste

organised in France equally shows strengthening of cooperation as a form of governance.

With three projects given over to organic recovery, and taking into account the anticipated rise in the direct collection of organic waste, Sycatom has also affirmed its strategy of diversifying household waste processing methods in favour of returning organic material to the earth.

Thanks to continuous efforts to control our expenses and the constant search for savings on operating costs, we have managed to control Sycatom's budget and even stabilise the amount of fees paid by our member municipalities, without compromising the quality of our service. As such, in 2010, the cost of waste processing did not result in high taxes for households in the

greater Paris area.

Honouring its commitment to the sustainable city, in 2010 Sycatom prepared the ground for a new decade.

2010,  
a year of  
affirmation  
for  
Sycatom, the  
Metropolitan  
agency  
for household  
waste

**-16%**  
waste  
incinerated  
since 2001

**1 new  
identity  
for  
Sycatom**

**€20.9  
million**  
in support for  
selective  
collections paid  
to member  
local authorities

**1 new  
prevention  
plan**

**69%**  
Recycling rate  
of selective  
collections

**+40%\***  
income from  
sale  
of materials

**€305.7  
million**  
in operating  
expenditure

**421kg**  
/person/year  
household waste  
in Sycatom's  
sphere on a  
like-on-like  
basis

**5,331  
visitors**  
to  
Sycatom's  
installations

\* Compared to 2009.

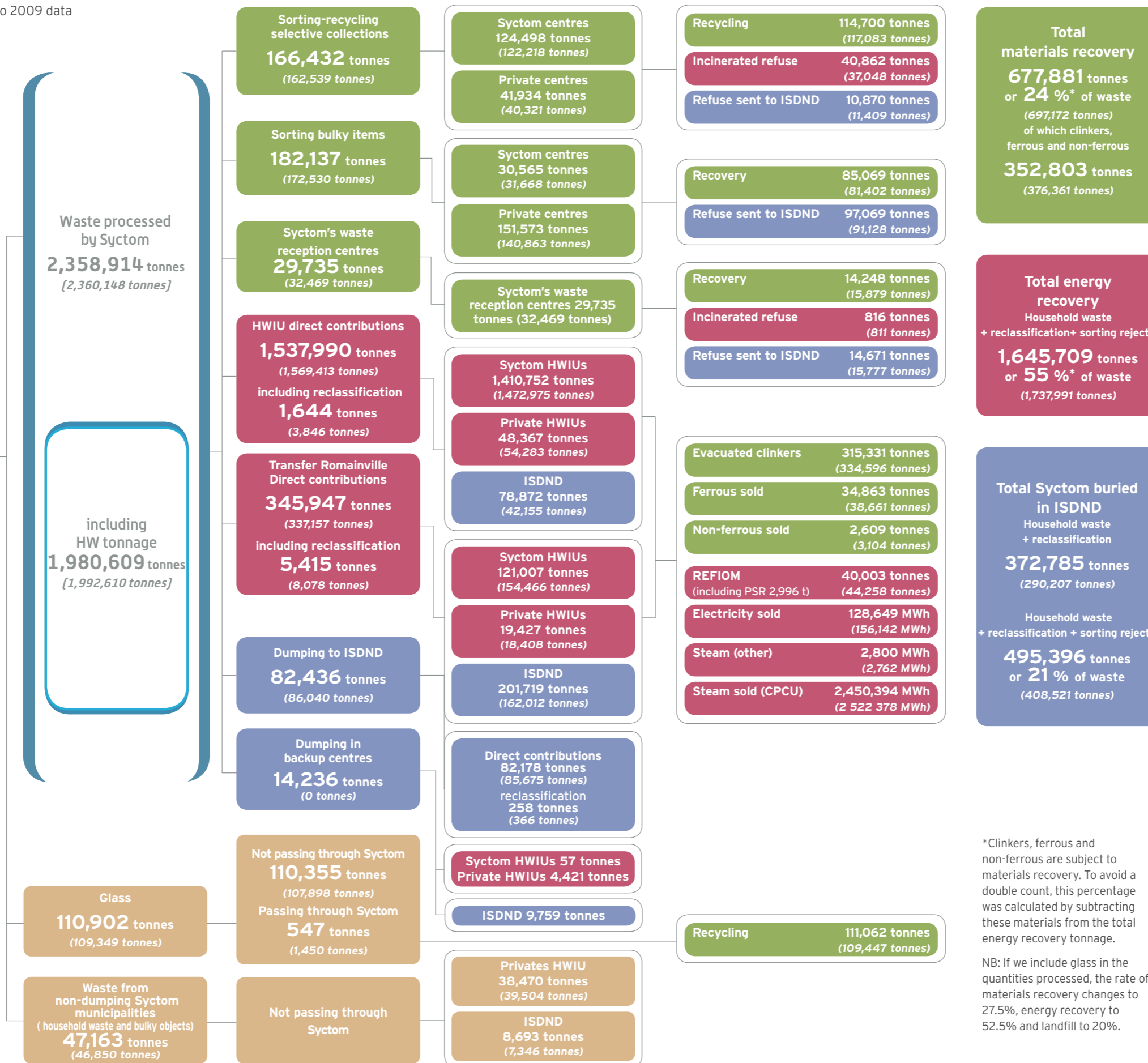
# 2010 operating summary

Figures in brackets correspond to 2009 data

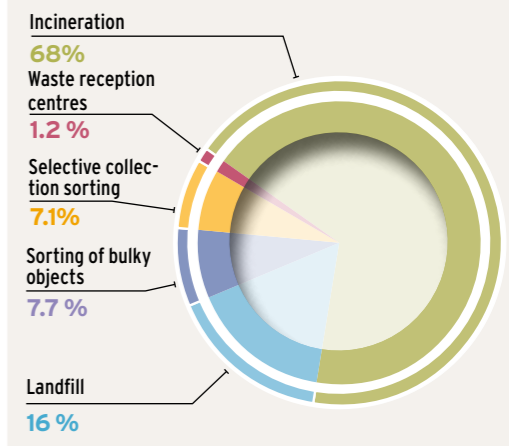
Human resources at 31/12/2010:

- Syctom: 115 agents
- Private operators of Syctom processing units: 729 staff

Total tonnage of household waste in Syctom's sphere  
**2,516,979 tonnes**  
(2,516,347 tonnes)



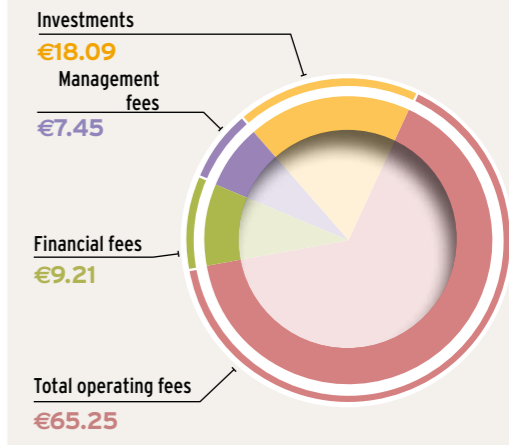
## BREAKDOWN OF TONNAGE BY PROCESSING METHOD



## COST OF PROCESSING BY THE TONNE

Selective collection	€205.66
Bulky objects	€98.22
Incineration with energy recovery	€88.12
Landfill (including transport)	€89.69

## USE OF FEES For 100 euros\*

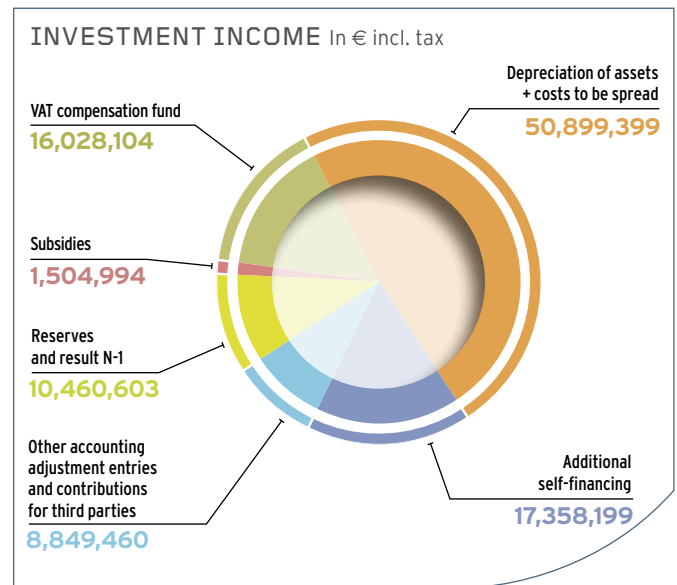
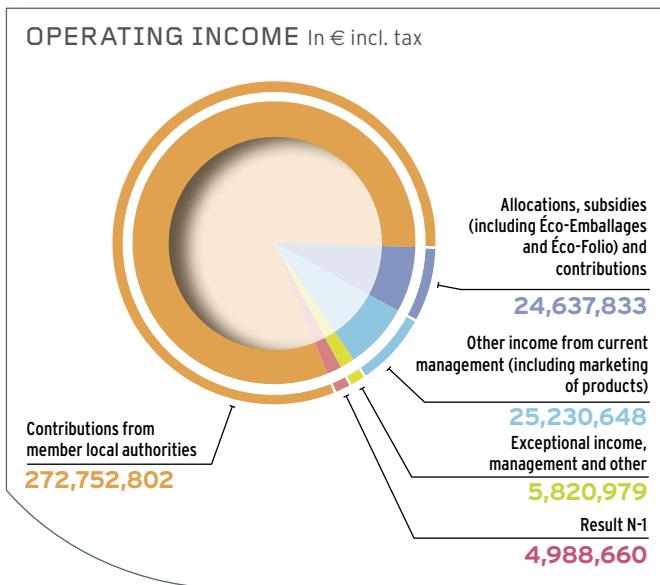
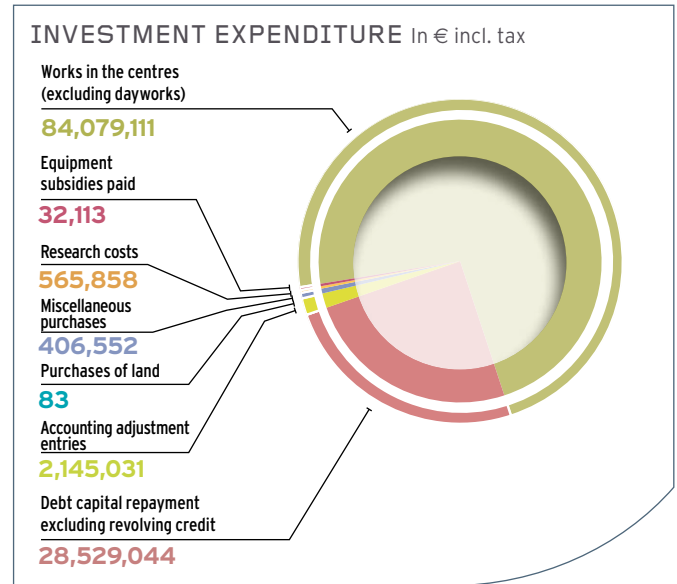
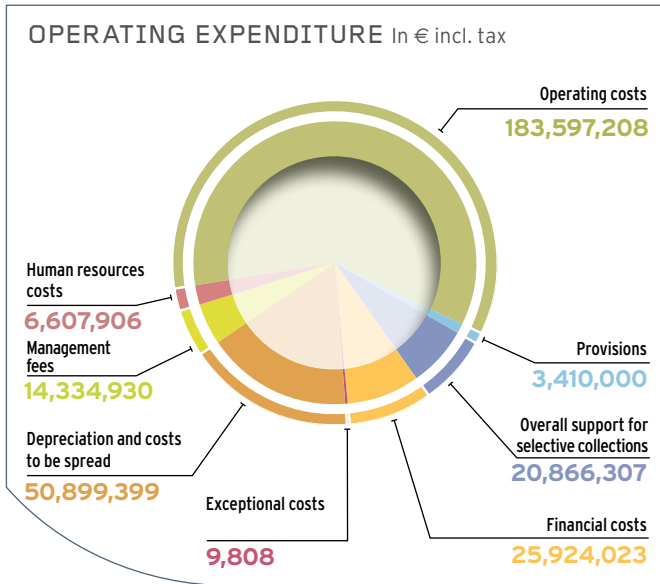


\*Clinkers, ferrous and non-ferrous are subject to materials recovery. To avoid a double count, this percentage was calculated by subtracting these materials from the total energy recovery tonnage.

NB: If we include glass in the quantities processed, the rate of materials recovery changes to 27.5%, energy recovery to 52.5% and landfill to 20%.

\* excluding exceptional costs

# Syctom's budget for 2010: €421.41m



## A public player serving the Paris region

Syctom, the Metropolitan agency for household waste, brings together 84 municipalities divided over 5 départements: Paris, Hauts-de-Seine, Seine-Saint-Denis, Val-de-Marne and Yvelines. It carries out a public service mission in urban ecology, processing and recovering household waste from half of all inhabitants in the Paris region, or almost 10% of the national population. Through its commitments, its mobilisation and carrying out its activity, it helps to promote sustainable development and reach the targets set by national and regional policies in the area of waste management. Driven by a territorial solidarity approach, it brings a global view to the challenges of metropolitan planning in the Paris region. Favouring cooperation, it is in touch with the needs of society in terms of quality of living environment.

## Syctom's installations

Concerned with assuming its full responsibility, Syctom has its own industrial facilities which it maintains, modernises and develops.

It invests to process household waste which is produced in its sphere, in accordance with a community logic.

Syctom has 14 processing units spread out over 8 municipalities: 6 selective collection sorting centres, 3 waste reception centres, 1 residual household waste transfer centre, 1 pre-sorting and transfer of bulky objects centre and 3 incineration units with energy recovery.

The following are currently being built: a methanisation unit in Romainville and a river platform in Bobigny.

The following are planned: 1 centre for the methanisation of silt and organic waste in Blanc-Mesnil/Aulnay-sous-Bois, and 2 selective collection sorting centres in the 17th and 12th arrondissements of Paris.