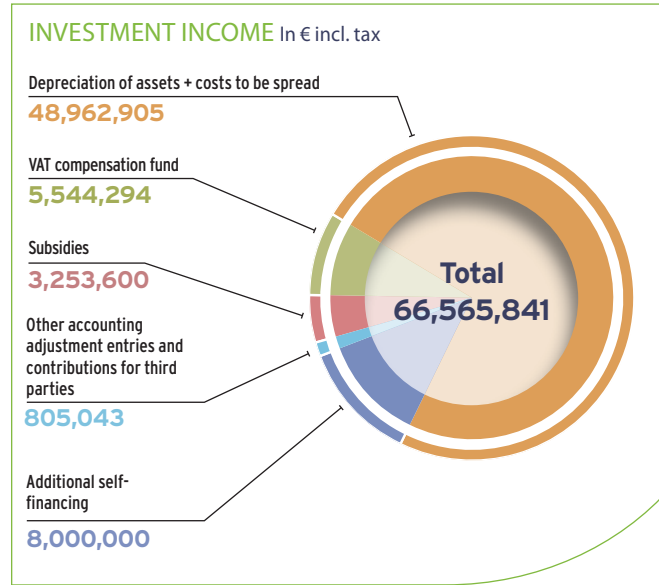
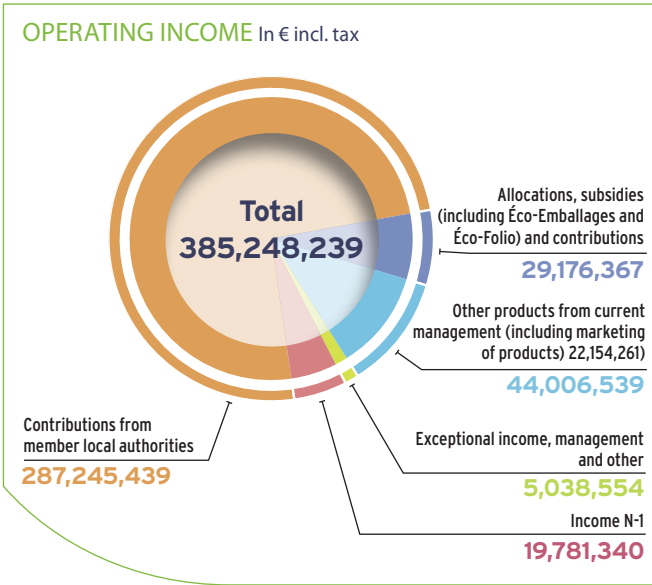
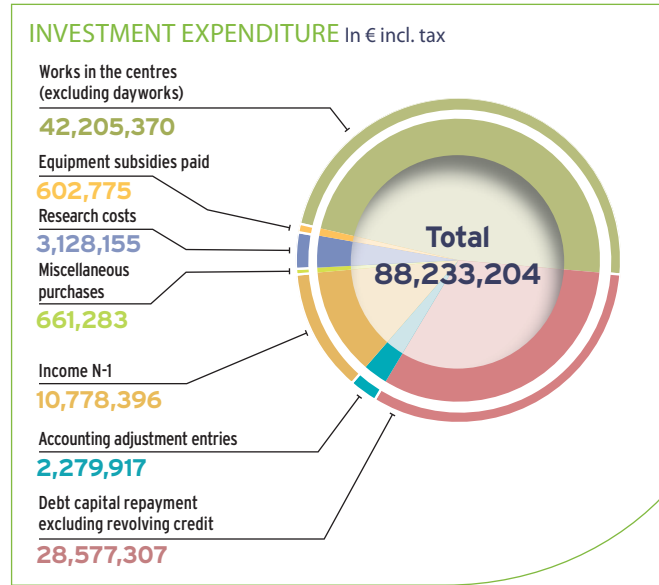
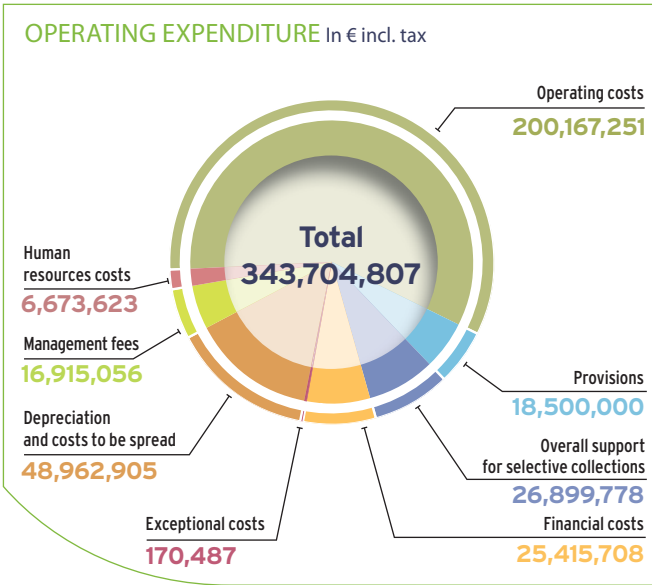


# 2011 SYCTOM BUDGET: €431.9M



### Towards a sustainable city

Syctom, the French agency for household waste, carries out a public service mission in urban ecology. It processes and recovers household waste from half of all inhabitants in the Paris region, or almost 10% of the national population. Through its commitments, its mobilisation and carrying out its activity, it helps to promote sustainable development and reach the targets set by national and regional policies in the area of waste management. Driven by a territorial solidarity approach, it brings a global view to the challenges of metropolitan planning in the Paris region. Favouring exchange and dialogue, it is closely linked with the expectations of society in terms of building a sustainable city.

### SYCTOM'S installations

Concerned with assuming its full responsibility, SYCTOM has its own industrial facilities which it maintains,

modernises and develops. It invests to process household waste which is produced in its sphere, in accordance with a community logic.

SYCTOM has 13 processing units spread out over 8 municipalities : 6 selective collection sorting centres, 2 waste reception centres, 1 residual household waste transfer centre, 1 pre-sorting and transfer of bulky objects centre and 3 incineration units with energy recovery. In 2011, it also mobilised 23 private installations.

Planned: 1 methanisation unit in Romainville and a river platform in Bobigny, the reconstruction of the selective collection sorting centre and the pre-sorting of bulky objects centre in Romainville, 1 sorting-methanisation unit and 1 incineration plant with energy recovery replacing the incineration plant in Ivry-Paris XIII, 1 centre for the methanisation of silt and organic waste in Blanc-Mesnil/Aulnay-sous-Bois, and 2 selective collection sorting centres in the 17<sup>th</sup> and 12<sup>th</sup> arrondissements of Paris.



### editorial

François DAGNAUD,  
Chairman of SYCTOM, the French agency for household waste

Sense of responsibility and capacity for initiative: 2011 clearly demonstrated the spirit which drives Syctom. Thanks to the work of all our teams and the officials of the syndicate committee, important and operational advances were made for the development of urban ecology.

The implementation of "Metropolitan Waste Prevention 2010-2014" and the unprecedented amount of resources allocated to the prevention and support of selective collections clearly demonstrate Syctom's efforts to reach the waste reduction and recycling objectives set by the Grenelle laws and the Paris PREDMA.

They also bear witness to the territorial solidarity adopted by Syctom, which is also illustrated in the signing of a collective contract with Eco-Emballages and the debate on governance launched to pool metropolitan resources and rationalise the management of the public waste collection and processing service.

But the sustainable city is also being developed through important investments. Thanks to strict management methods, Syctom is preparing to continue its debt reduction, which it has been doing for three years running.

With the commissioning of the first selective collection sorting centre in 2011 and the approval of the final schedule for the planned organic and energy recovery centre in Ivry-Paris XIII, Syctom is firmly committing itself to following an ambitious and innovative path which will pave the way for waste processing in the metropolitan area of tomorrow.

While the legal framework for waste management is constantly changing, we are committed to making clear choices, taken in consultation, to provide the inhabitants of the metropolitan area a highly effective public service in urban ecology.

**-4%**  
less waste processed by Syctom since 2008

**+42%**  
more visitors to Syctom's installations in 2011

**+15%**  
increase in product sales (material and energy)

**420**  
kg/person/year household waste in SYCTOM's sphere

**€ 26.9**  
million of support for selective collection granted to member municipalities

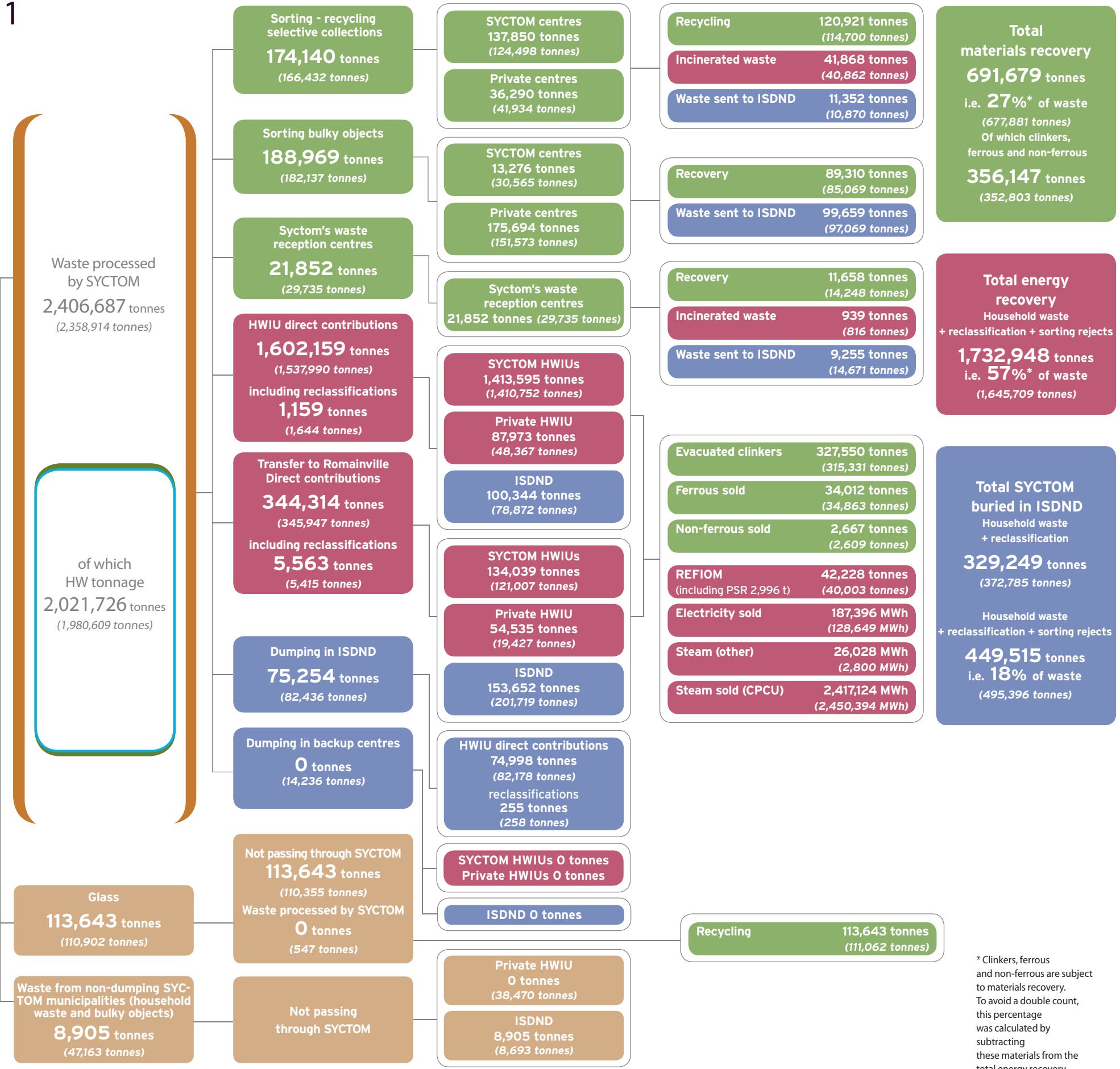
**1**  
commissioning of the selective collection sorting centre in Paris XV

**2,000**  
composters delivered to member local authorities

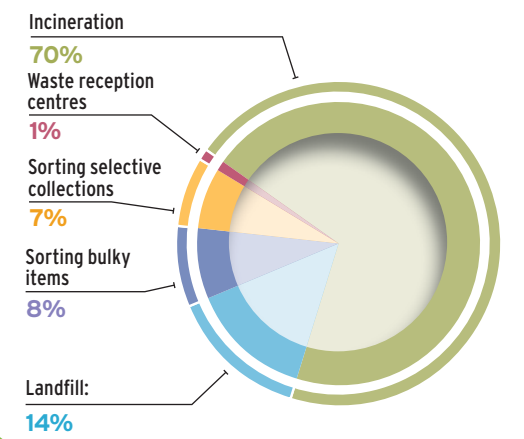
# OPERATING SUMMARY 2011

Figures in brackets correspond to 2010 data.  
The 2011 data were drawn up on 30 April 2012.

Total tonnage of household waste on SYCTOM's territory  
**2,529,235 tonnes**  
(2,516,979 tonnes)



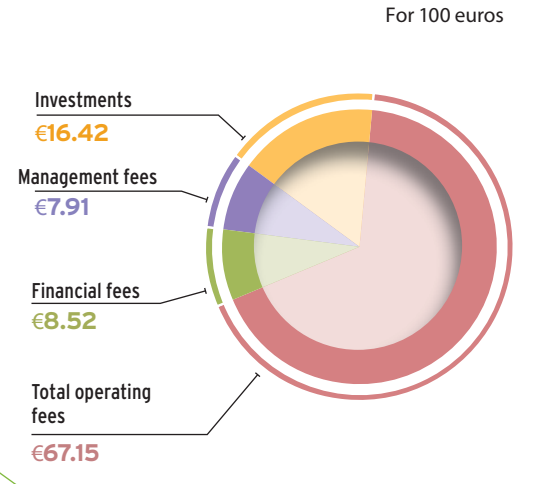
## BREAKDOWN OF TONNAGE BY PROCESSING METHOD



## COST OF PROCESSING PER TONNE

Sorting selective collections	€225.92
Bulky objects	€100.02
Incineration with	
Energy recovery	€83.59
Landfill (including transport)	€92.20

## USE OF THE FEES



\* Clinkers, ferrous and non-ferrous are subject to materials recovery. To avoid a double count, this percentage was calculated by subtracting these materials from the total energy recovery tonnage.