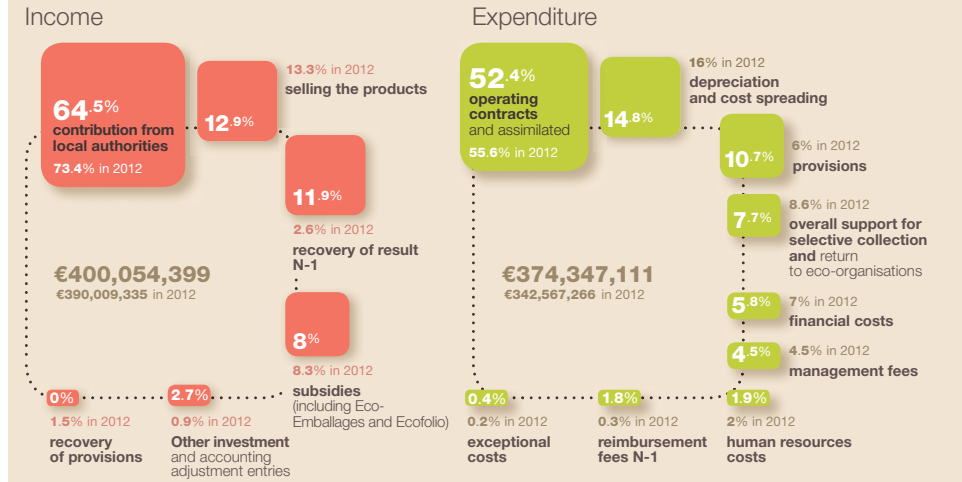


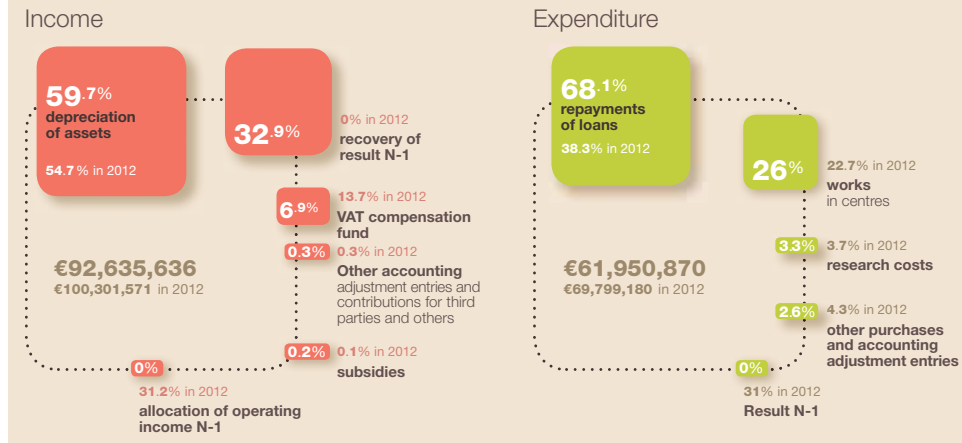
Key figures 2013

Data from the administrative accounts 2013

OPERATIONS



INVESTMENT



A PUBLIC SERVICE IN URBAN ECOLOGY ON A METROPOLITAN SCALE

Syctom, the metropolitan agency for household waste, processes waste in the most densely populated area of France. Its public service mission is carried out in close collaboration with everyone involved in making the Paris area fully functional and managing waste. With the strength of this collective approach behind it, Syctom takes its role as a dynamo of the waste sector very seriously, bearing in mind what the future holds for the metropolitan area.

PROCESSING AND RECOVERING WASTE FOR HALF THE POPULATION OF THE PARIS AREA

The very core of Syctom's role, processing and recovering waste in the Paris region must, as of today, meet the imperatives of environmental and energy transition. While continuing to strengthen its existing installations, the metropolitan agency for household waste is preparing for the future with various innovative projects which are currently in the research and consultation phases. These projects are part of an overall vision for providing for the metropolitan area and have the same objective: ensuring that our equipment is best suited to the types and quantities of waste produced in the area.



ANNUAL REPORT 2013



Above all else, I would like to pay tribute to the wonderful personal qualities and brilliant work done by François Dagnaud during his two mandates. He has been an indefatigable chairman, researching a constructive consensus - something he has always known the value of - to federate the five territories of Syctom, the metropolitan agency for household waste, behind a common destiny.

Reading the report on Syctom's activities in 2013, I would also like to congratulate the teams for their commitment to the public service of eliminating waste and the many actions they have implemented, especially to meet the challenge of reducing tonnages.

New challenges await Syctom in the coming years: firstly, the governance that we must henceforth construct alongside the future Greater Paris metropolis. Like all major Parisian technical syndicates, Syctom must make its voice and its history heard, to be able to take its rightful place in the preparatory work on the metropolitan area that is coming into being. It is essential that citizens continue to be guaranteed high-quality public services when it comes to waste management, such as local authorities currently offer.

Syctom draws strength from its dialogue with all its local partners, to guarantee a coherent, efficient waste policy, while reinforcing collaboration with primary syndicates, SYELOM and SITOM93, and developing mutualised processing methods with SIGIDURS (Val-d'Oise), SIEVD (Val-de-Marne) and even with other syndicates in the region. Syctom has chosen tools that allow it to optimise territorial organisation, for instance the waste PACT (the Programme for Improving Collection and Processing), which will continue to be developed. Our efforts must also focus on the dynamism of all types of sorting, so we always recycle more and better, and of course on our capacity to renew our major processing tools that are closest to the waste produced in our territory.

More than ever, Syctom's policies must be based on its founding values, regional solidarity and consultation with local authorities, local organisations and inhabitants, and on the strong support of national and regional public authorities.

It is up to all of us newly elected officials to live up to these ambitions so that together we can make our mission a sustainable one, as society now requires.

HERVÉ MARSEILLE

Senator of Hauts-de-Seine, Mayor of Meudon
Chairman of Syctom, the metropolitan agency for household waste, since 4 June 2014

-8.5%
waste produced per inhabitant between 2008 and 2013

+48%
visitors to Syctom facilities since 2008

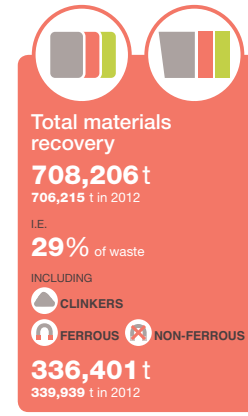
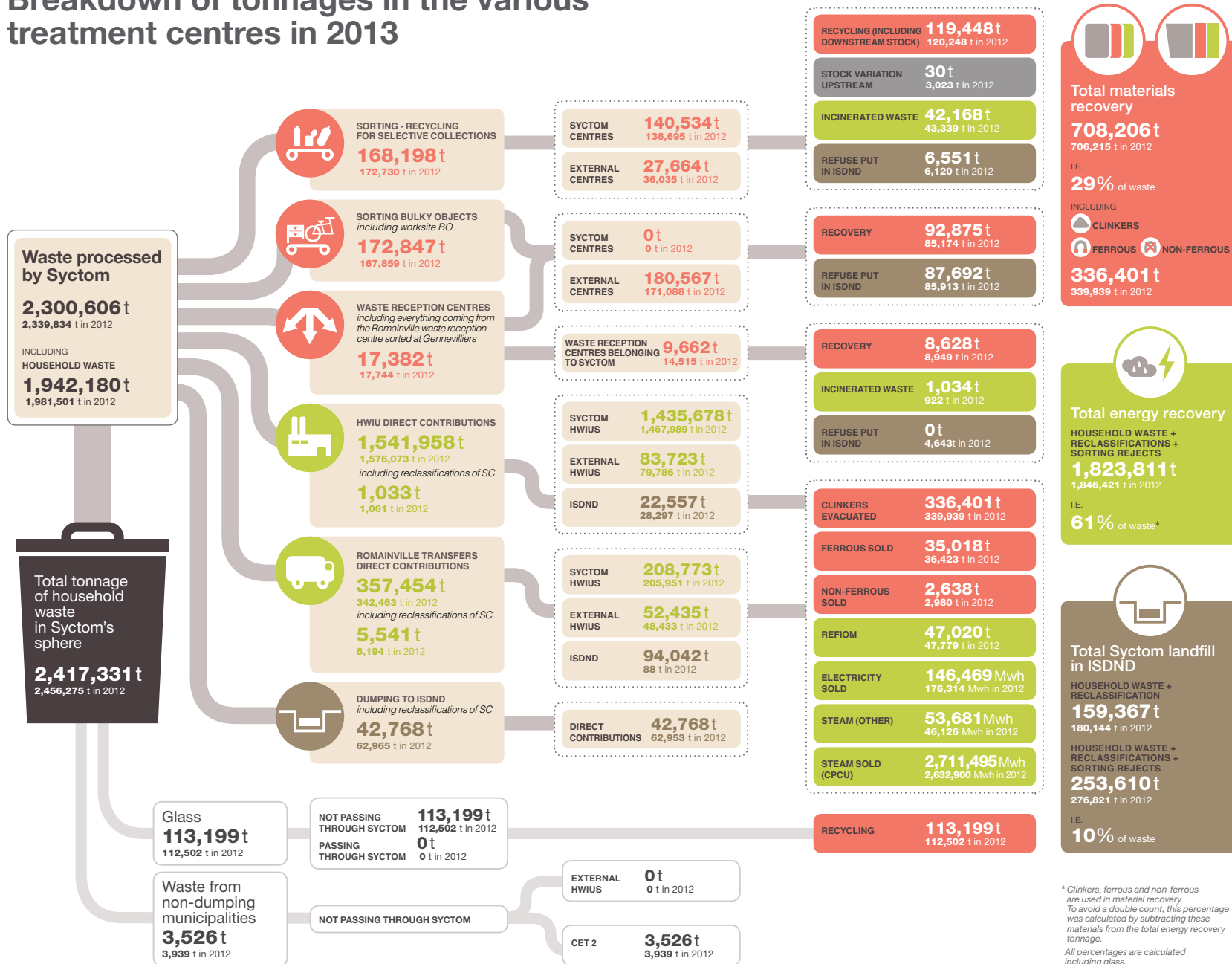
-€28.1M
on contributions required of member local authorities between 2012 and 2013

€51.4M
Total income from energy recovery

Nearly **320,000**
housing equivalents heated

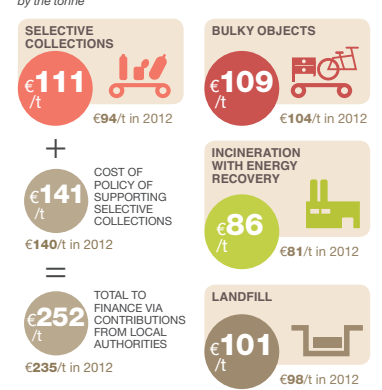
-21,000t
of waste stocked in ISDND in 2013

Breakdown of tonnages in the various treatment centres in 2013



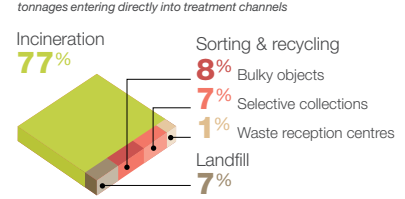
* Clinkers, ferrous and non-ferrous are used in material recovery. To avoid a double count, this percentage was calculated by subtracting these materials from the total energy recovery tonnage. All percentages are calculated including glass.

PROCESSING COST



Net costs for processing have progressed in 2013 for two key reasons: first, a decrease in income from sales of recycled materials and energy; second, an increase in expenditure under the effects of inflation and tax increases (TGAP, low water fees).

BREAKDOWN OF TONNAGES BY PROCESSING METHODS



CONTRIBUTION FROM LOCAL AUTHORITIES



USE OF THE FEES

