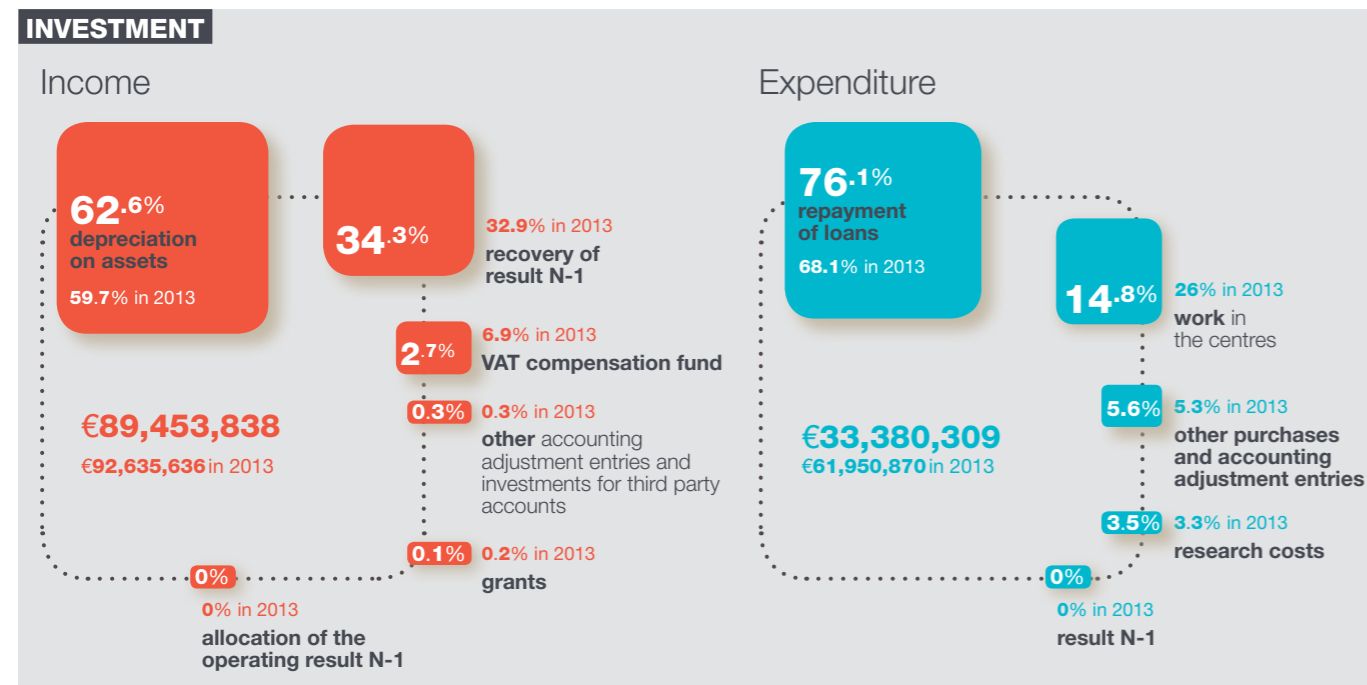
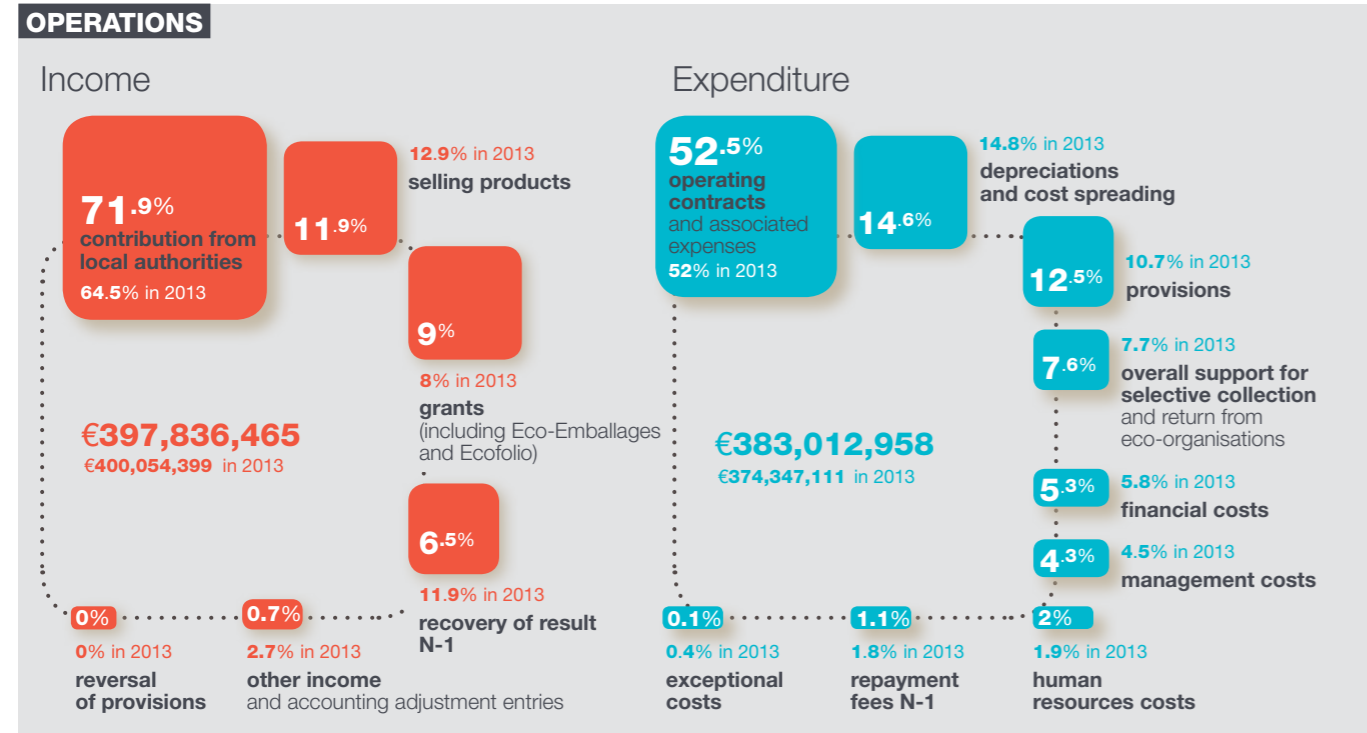


Key figures 2014

Data from the administrative accounts 2014



SYCTOM SERVING LOCAL AUTHORITIES IN ITS SPHERE

Syctom processes and recovers waste in the most densely populated area of France. To deliver this public service successfully, it works in close collaboration with local authorities in charge collecting waste and with all local partners. A collective approach that foreshadows the future of waste industry on the scale of the future Metropolis of Greater Paris.

SYCTOM'S INDUSTRIAL TOOL

To handle the amount and type of waste produced in the area as precisely as possible, Syctom has an efficient, constantly-evolving industrial park. Process improvement, integration of state-of-the-art technologies, adaptation of capacity. Everything is done to increase waste recovery and limit the use of landfills.



l'agence
métropolitaine
des déchets
ménagers

OPERATING SUMMARY 2014



Every day, for over 30 years, Syctom has been providing the public service of processing the household waste produced by 6 million inhabitants in the Paris central urban area.

Each year, nearly 2.1 million tonnes of waste enter the public facilities of Syctom, the project owner; this organisation has no equivalent in Europe, with a total energy recovery capacity of 250 tonnes/hour, producing renewable energy in the form of steam, which is used in the district heating networks of Paris and inner suburbs,

but also electricity for the needs of the processing.

Syctom draws its strength from this dense urban area, because it allows member public authorities to benefit from a technological showcase and a high performance industrial tool, with substantial financial leverage and resources. But its strength is also its weakness, giving rise to a number of challenges: an urban density that is among the highest in the world, highly scarce land availability, type of housing that hinders the development of efficient collection processes, notably packaging or biowaste.

In this dense urban area, public processing facilities still suffer from inadequate capacity. As a direct consequence, almost 10% of waste produced in Syctom's sphere is landfilled. To reverse this trend, Syctom has initiated an innovative metropolitan strategy, both in terms of governance and technical facilities to be implemented. This new milestone will bring all public stakeholders in the area closer together to more effectively tackle the problems posed by the management of all waste, in its entirety, whether produced by households or businesses, whether solid or liquid.

Given that all regional public processing capabilities are fairly adequate, and must be reinforced wherever possible, it becomes appropriate to network dedicated facilities beyond the administrative boundaries of each syndicate. Our reflection should focus on sharing all existing infrastructure, bolstered by efficient and sustainable transport logistics. The objective is to achieve a common and shared development, and create energy centres useful to the City of tomorrow.

As in all great metropolises worldwide, Syctom will thus contribute to the success of this "zero waste roadmap", by stopping the landfilling of recoverable waste. To this end, we must guarantee quantitative and qualitative inputs to each specialised processing channel, develop local heating networks supplied with renewable and recovered energy, which will minimise the landfilling of inert waste.

Finally, all topics related to this future governance and the pooling of resources will be discussed during the first metropolitan conference on waste organised by Syctom on 2 July 2015 in the morning at the Maison de la Chimie.

HERVÉ MARSEILLE
Senator of Hauts-de-Seine
Mayor of Meudon
Chairman of Syctom, the metropolitan agency for household waste

+3.7%
Growth in separate collection
between 2013 and 2014

-23%
of household waste landfilled
between 2013 and 2014

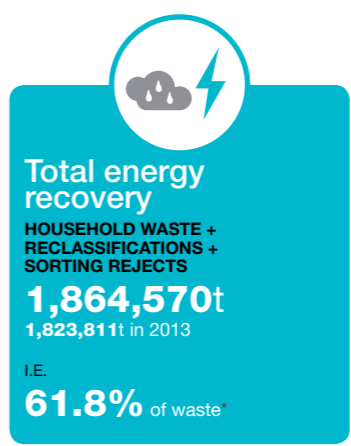
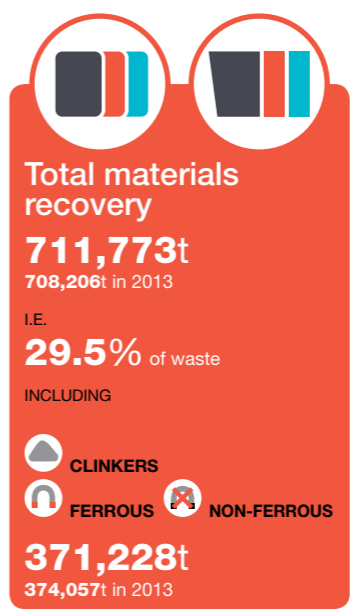
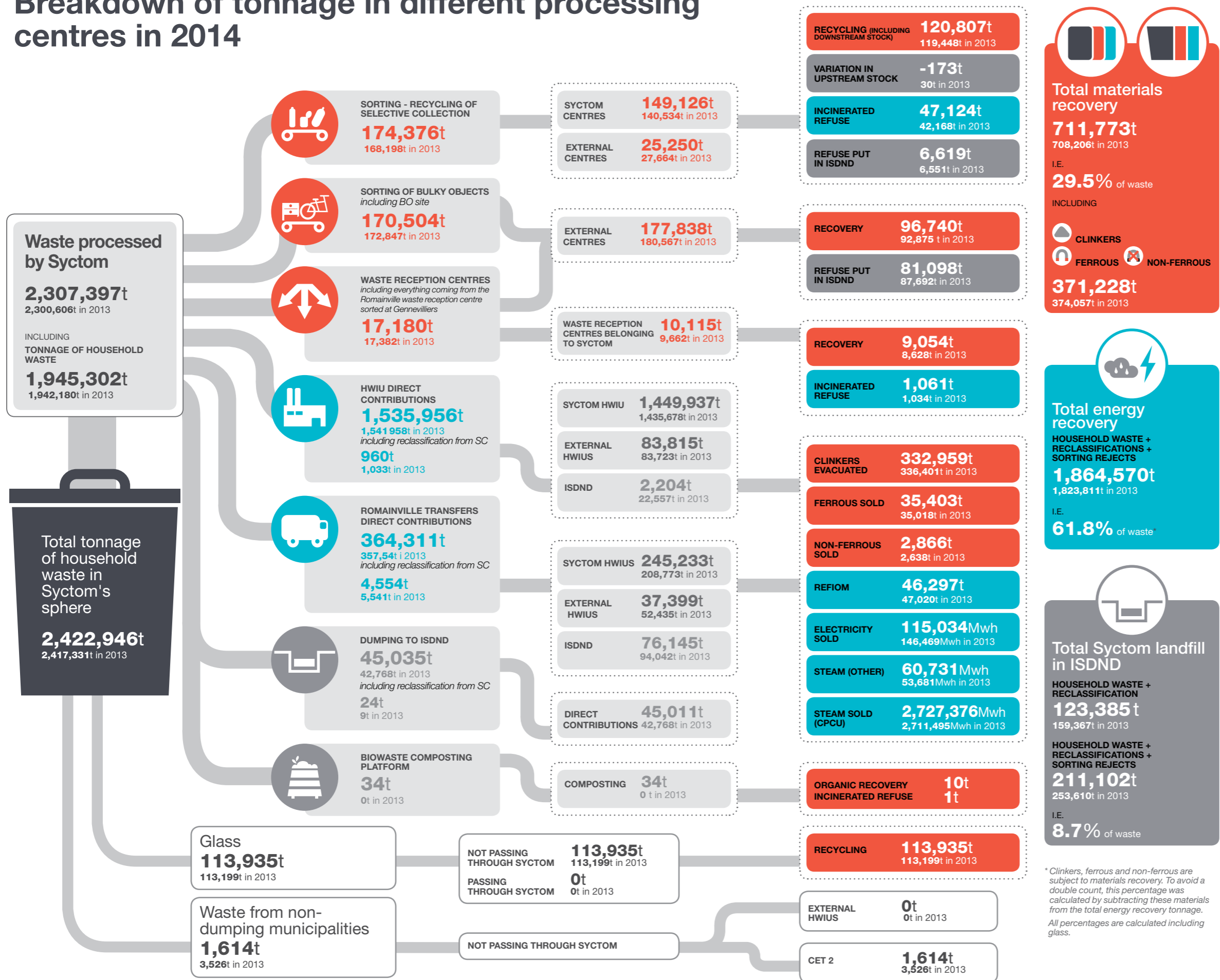
+7,000t
of operating capacity
for the sorting centre in Sevran

€1.3 Million
worth of support for initiatives taken
in the territory in 2014 (High Potential
Municipalities + Metropolitan Waste
Prevention plan)

7
large syndicates in the area
(including Syctom) partnered in 2014
to pool their expertise in the fields of
water, energy, waste

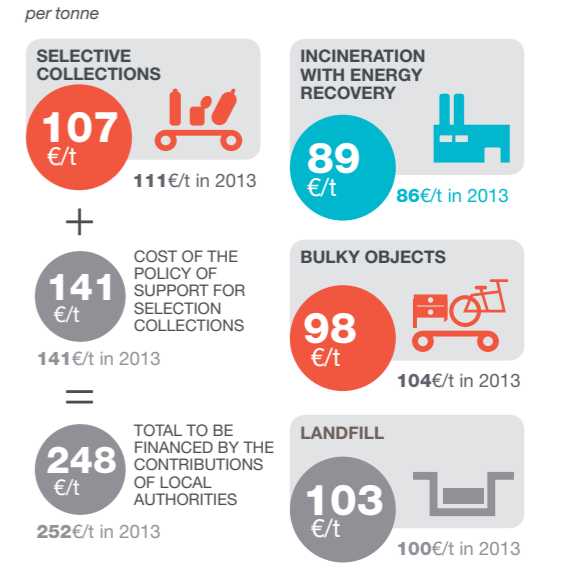
32,500
households practising home
composting through the
"50,000 composters" scheme

Breakdown of tonnage in different processing centres in 2014

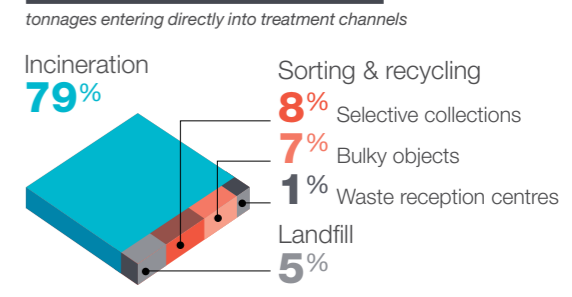


*Clinkers, ferrous and non-ferrous are subject to materials recovery. To avoid a double count, this percentage was calculated by subtracting these materials from the total energy recovery tonnage. All percentages are calculated including glass.

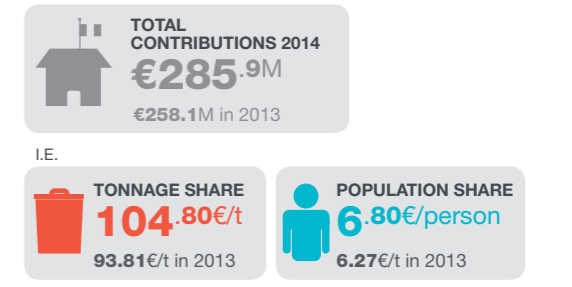
COST OF PROCESSING



BREAKDOWN OF TONNAGE BY PROCESSING METHODS



LOCAL AUTHORITIES



USE OF THE FEES

